

SDM-4000 Display Maestro

A smart and scalable solution for multiple digital signage applications



The **SDM-4000 Display Maestro** is a stand-alone, multi-output true HD player that functions as a one-stop digital signage solution.

Engineered by GDC Technology's experienced digital cinema R&D team, the SDM-4000 runs on a stable Linux platform and is built as an industrial solution for the secure, round-the-clock operation of a large digital signage network. Featuring multiple video/audio outlets, the SDM-4000 can be used as a "one-for-all" player to centrally and cost-efficiently manage a large number of connected displays. The SDM-4000 also supports a variety of content formats and features a unique "sync" function that screens synchronized content across an entire video wall formed by numerous displays.

Reliable, economical and versatile - the SDM-4000 offers an ideal blend of features to suit your digital signage needs in various applications, which include large-screen projection, dome projection and on-screen advertising.

Unparalleled Image Quality

Featuring true HD capability, the SDM-4000 playback four (4) synchronized high definition resolution pictures (1920x1080p) in a single box; multiple SDM-4000s can be linked together to produce super-high resolution video in multiples of 1920x1080p.

Multiple media formats supported

The SDM-4000 supports the following video and picture sources:

- Graphic - JPEG, BMP
- Video - MPEG1, MPEG2, Flash, XVID
- Ingest (packaging) - DSR™, DVD (.VOB), AVI, and VCD
- Text - RSS and custom text format

"Live" data feeds can be integrated with content to show information like weather, sports scores, news, movie titles and schedules.

Content can also be imported via mobile HDD, satellite (DVB-IP) and network.

Display screen compatibility

The SDM-4000 can interface with various projectors and display screens, including CRTs, LCDs, plasma screens and public display panels. The SDM-4000 can be customized to control projectors or display screens.

Programmable scheduler

The SDM-4000's scheduler enables users to create, distribute and manage playlists for each of the displays connected to the system. The SDM-4000 can thus be used as a single server to centrally manage all connected displays and functions as a cost effective solution for running a large digital signage network.

Simple and user-friendly

The intuitive and multi-lingual interface on the server's LCD touch-screen is designed for easy user navigation and operation.

Bluetooth interactivity

Passers-by can interact with the SDM-4000 using their Bluetooth devices.

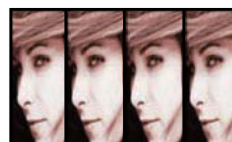
Designed for usability

The SDM-4000 comes standard with four (4) sets of video and audio outputs and can be configured for a wide range of digital signage applications.



Assorted

Outputs are independent. Four (4) playlists (one from each output) can be distributed to four (4) different groups of displays.



Duplicated

Outputs are the same. All connected displays screen the same playlist at the same time.



Video Wall

Outputs are synchronized. Pictures of super-high resolution can be shown on an entire video wall formed by multiple displays.

To cater for scalability, outputs from multiple SDM-4000s can also be configured for synchronized playback on a larger video wall with more than four (4) displays.

Switchable display modes

Content can be put together in different ways.



Picture-in-Picture (PIP)



Picture-and-Picture (PAP)

Model **SDM-4000**

G·D·C
TECHNOLOGY



GDC Technology Offices

Singapore

6 Changi South Street 2,
Fedex Building, Level 7,
Singapore 486349
Tel: +65 6222 1082
Fax: +65 6222 1089

China Hong Kong SAR

Unit 2, 21st Floor,
Kodak House II,
39 Healthy Street East,
North Point, Hong Kong
Tel: +852 2579 1070
Fax: +852 2579 1131

China Beijing

Rm. 518-520, Tower B,
No.11 De Wai Street,
Xi Cheng District,
Beijing, P.R. China 100088
Tel: +86 10 6205 7040
Fax: +86 10 6205 7054

China Shenzhen

Block B, Yuehaimen Square,
No. 2292-2300 Nanhai Blvd.,
Shenzhen, P.R. China 518052
Tel: +86 755 8611 0889
Fax: +86 755 8611 0899

USA

3500 W Olive Ave.,
Suite 1110, Burbank,
California, CA 91505
Tel: +1 818 972 4370
Fax: +1 818 972 4374

Email: info@gdc-tech.com

Website: www.gdc-tech.com

Copyright © 2009
GDC Technology, Hong Kong.
All rights reserved.

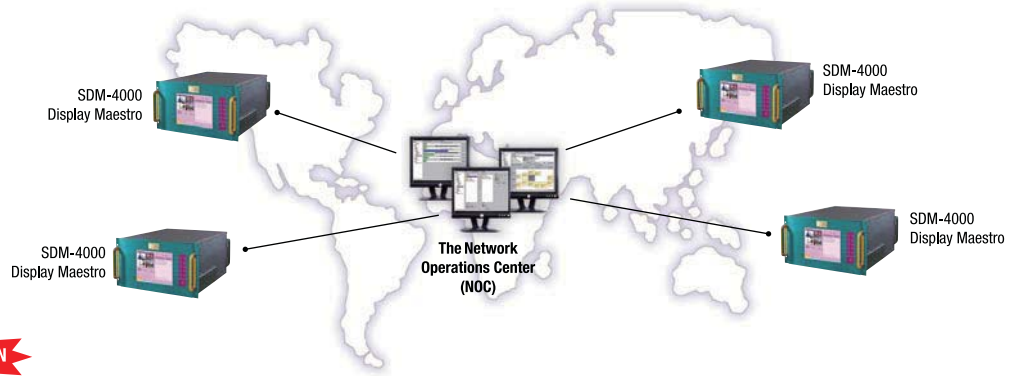
All trademarks listed in this
brochure are properties of
their respective owners.

Specifications are subject
to change without notice
due to ongoing product
development and
improvement.

GDC manufacturing
facility is
ISO 9001: 2000 certified.



PB-0009-0908-V1E



Network Operations Center (NOC)

The **Network Operations Center (NOC)** software is a separate tool for managing both digital cinema and digital signage servers from an off-site location.

Through the NOC, users can remotely perform several tasks on each connected SDM-4000, including:

- management and delivery of content for all servers (central storage/archive)
- creating "master" playlists, then scheduling and distributing them to the servers
- monitoring the performance status of networked servers
- retrieving a "Proof-of-Play" log that lists the play times and frequency of play of content in all servers

SDM-4000 Display Maestro Technical Specifications

Physical

Dimensions 552mm (L) x 482.6mm (W) x 265.9mm (H) 6RU
Weight 25kg (55 lbs)

Environmental

Operating temperature 5°C to 40°C (41°F to 104°F)
Operating humidity 20% to 90%, non-condensing
Operating altitude 10,000ft. above sea level

Power

Power requirement 100 to 240V AC +/- 10%,
50/60Hz (15A max.)
Power consumption 460W
Uninterrupted power 3-way, meets IEEE STD 587 Cat.
Supply (UPS) with surge protection (optional) A 6KV test
Redundant power supply (optional) Redundant internal hot-swappable x 3

Video Performance

Formats 352 x 240 (VCD), 720 x 480 (DVD), 720 x 576 (DVD), 960 x 540, 1024 x 768, 1280 x 720, 1280 x 1024, 1920 x 1080 (HD), all Progressive
Compression MPEG1, MPEG2 and JPEG
Packaging VCD, DVD and DSR™ packaging format
Playout modes (up to 4 video channels)

- Assorted – playout 4 independent playlists to a group of displays
- Duplicated – playout the same playlist to a group of displays
- Video Wall – playout high resolution video on up to 4 displays with a single SDM-4000 (larger video walls are supported with multiple networked SDM-4000s)

 Video scaling High-quality scaling (up-scaling and down-scaling) of video files to match output resolution set on the video outputs (VGA/DVI)

Video Output

4 video channels Selection of VGA x 4 or DVI x 4 or a combination of VGA & DVI

Audio Output

Uncompressed analog audio 4 x 2 channels
AC3 audio Pass-through on 1 S/PDIF channel (Output 1)

System Interfaces

IEEE1394 Firewire® IEEE1394 6-pin male, up to 400Mbps
Gigabit RJ-45, 10/100/1000Mbps
USB USB A-Type male
Mouse and keyboard
RS232 (optional) D-sub 9-pin

Storage

Storage From 17 hours @ 28Mbps
RAID-1 (optional) From 17 hours @ 28Mbps or From 40 x (4.7GB) DVD5 onwards

Security

AES 128-bit encrypted data storage
Time-stamp playout

LCD Panel

Viewable image size 10.4"
Active display area 211.2mm (H) x 158.4mm (V) (viewable area measured diagonally)
Touch screen (optional)

